

Dreamweaver Site Management

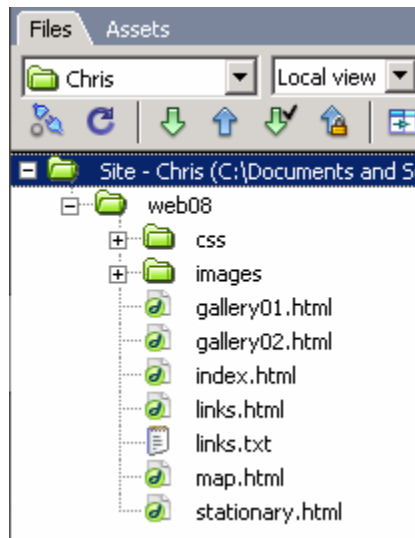
- I. Define the site by choosing **Site>Manage Sites** from the menu. When the Manage Sites window appears, click the New button, and choose Site from the pop-up list.
 - a. Answer “What would you like to name your site?” with your first name.
 - b. Answer “No, I do not want to use a server technology.”
 - c. Answer “Edit local copies on my machine, then upload to server when ready”.
 - i. Click the Browse for File icon (folder) and locate and open the “workshopXX” folder on the desktop, for example, “workshop08.” Click Select. *Note that from now on the handout refers to workshop08 and web08 for convenience. Your number will match your computer.*
 - ii. Verify that the last word in the text field is “workshop08”.
 - d. Pick “FTP” from the list labeled “How do you connect to your remote server?”
 - i. Type **labweb.education.wisc.edu** in the “hostname” field.
 - ii. Type **/workshop** in the “folder on the server” field.
 - iii. Type **web08** in the “FTP Login” field.
 - iv. Leave the Password field blank. (*See figure.*)
 - e. Answer “No, do not enable check in and check out.”
 - f. Review the summary then click Done.
 - g. Click Done to close the Manage Sites window.

The screenshot shows the "Site Definition for Chris" dialog box in Dreamweaver. The "Basic" tab is selected. The dialog has a title bar with a close button. Below the title bar are tabs for "Basic" and "Advanced". A decorative banner at the top contains the text "Site Definition" and an illustration of a computer and a globe. Below the banner are three sub-tabs: "Editing Files", "Testing Files", and "Sharing Files". The main area contains the following fields and options:

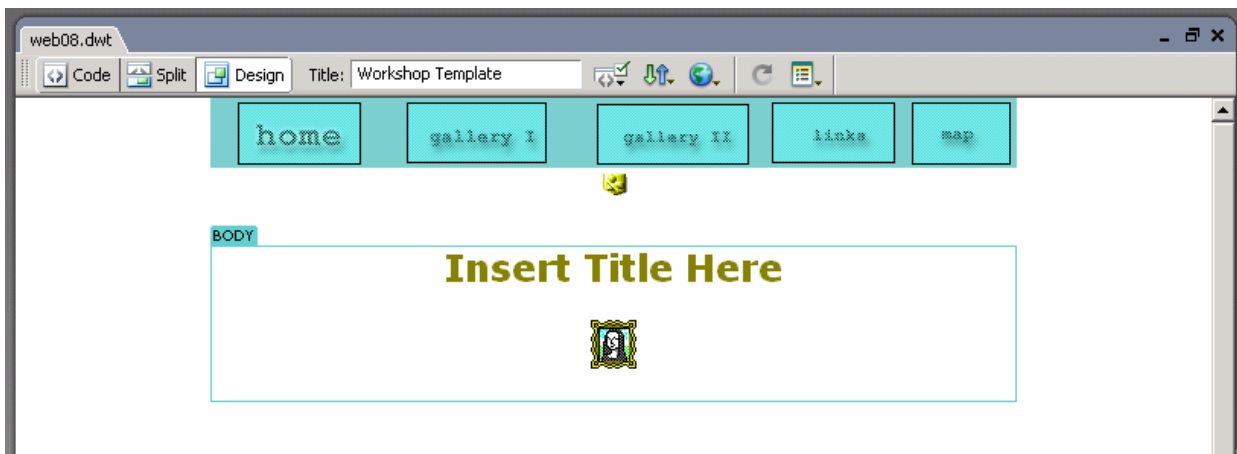
- "How do you connect to your remote server?" dropdown menu set to "FTP".
- "What is the hostname or FTP address of your Web server?" text field containing "labweb.education.wisc.edu".
- "What folder on the server do you want to store your files in?" text field containing "/workshop".
- "What is your FTP login:" text field containing "web08".
- "What is your FTP password:" text field, which is empty.
- A "Save" checkbox, which is unchecked.
- A "Use Secure FTP (SFTP)" checkbox, which is unchecked.
- A "Test Connection" button.

At the bottom of the dialog are four buttons: "< Back", "Next >", "Cancel", and "Help".

- II. Make a Dreamweaver Template.
 - a. Open the stationary.html file in the Files window. *Click the plus sign (+) beside the web08 folder to reveal its contents if the stationary.html file is not visible.*

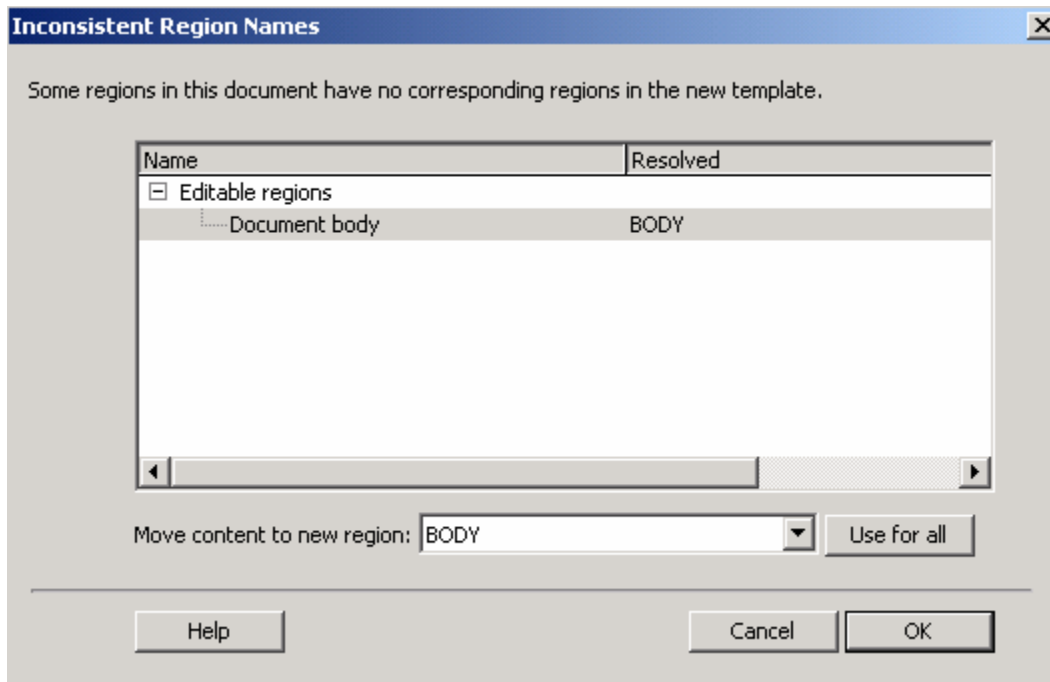


- b. Choose **File>Save as Template** from the menu and name the file 'web08'.
 - c. When asked to Update Links, click Yes.
 - d. Make a single editable region in the middle of the document.
 - i. Highlight the 'Insert Title Here' line and the Mona Lisa icon.
 - ii. Choose **Insert>Template Objects>Editable Region** from the menu.
 - iii. When prompted to name the region, type **BODY**. (*See figure.*)
 - e. Choose **File>Save** from the menu to finish.
 - f. Close the document window.



- III. Apply the template to the home page, "index.html".
 - a. Open 'index.html' from the Files window.
 - b. Choose **Modify>Templates>Apply Template to Page** from the menu.
 - c. When prompted to choose a template, select 'web08'.
 - d. When prompted by the "Inconsistent Region Names" dialog, highlight

- “Document body” from the list. Select “BODY” from the drop-down list labeled “Move Content to new region” and click OK. (See figure.) The template will appear around the content.
- Replace the title “Workshop Template” with “Dreamweaver Gallery”.
 - Click anywhere on the “Dreamweaver Gallery” line in the body of the document then choose Heading 2 from the Format list in the Properties window.
 - Choose **File>Save** to preserve these changes.



- Preview the page in a browser.
 - Choose **File>Preview in Browser>iexplore** (Internet Explorer).
 - Click the Maximize button in the browser window’s title bar (the small square). Note how the page centers itself when the window expands and collapses.
 - Choose **File>Close** to exit the browser (Internet Explorer).
 - Close the "index.html" document window within Dreamweaver.
- Apply the template to the Gallery I page, “gallery01.html”.
 - Open ‘gallery01.html’ from the Files window.
 - Choose **Modify>Templates>Apply Template to Page** from the menu.
 - When prompted to choose a template, select ‘web08’.
 - When prompted by the “Inconsistent Region Names” dialog, highlight “Document body” from the list. Select “BODY” from the drop-down list labeled “Move Content to new region” and click OK.
 - Replace the title “Workshop Template” with “Gallery I”.
 - Click anywhere on the “Gallery I” line in the body of the document then choose Heading 2 from the Format list in the Properties window.
 - Choose **File>Save** to preserve these changes.
 - Close the document window.

- VI. Repeat the previous steps to apply the template to 'gallery02.html' and 'map.html'.
- VII. Applying the Template to the 'links.html' document.
 - a. Open 'links.html' from the Files window.
 - b. Choose **Modify>Templates>Apply Template to Page** from the menu.
 - c. When prompted to choose a template, select 'web08'.
 - d. When prompted by the "Inconsistent Region Names" dialog, highlight "Document body" from the list. Select "BODY" from the drop-down list labeled "Move Content to new region" and click OK.
 - e. Replace the title "Workshop Template" with "Museum Links".
 - f. Click anywhere on the "Museum Links" line in the body of the document then choose Heading 2 from the Format list in the Properties window.
 - g. Highlight the museum lines and click the Align Left icon in the Property window.
 - h. Make each URL in the museum lines an active link.
 - i. Highlight each URL, and press Ctrl+C to copy the text.
 - ii. Move to the Link field in the Property window, and press Ctrl+V to paste the URL into this field.
 - iii. Repeat the previous two steps for each URL listed.
 - i. Choose **File>Save** to preserve these changes.



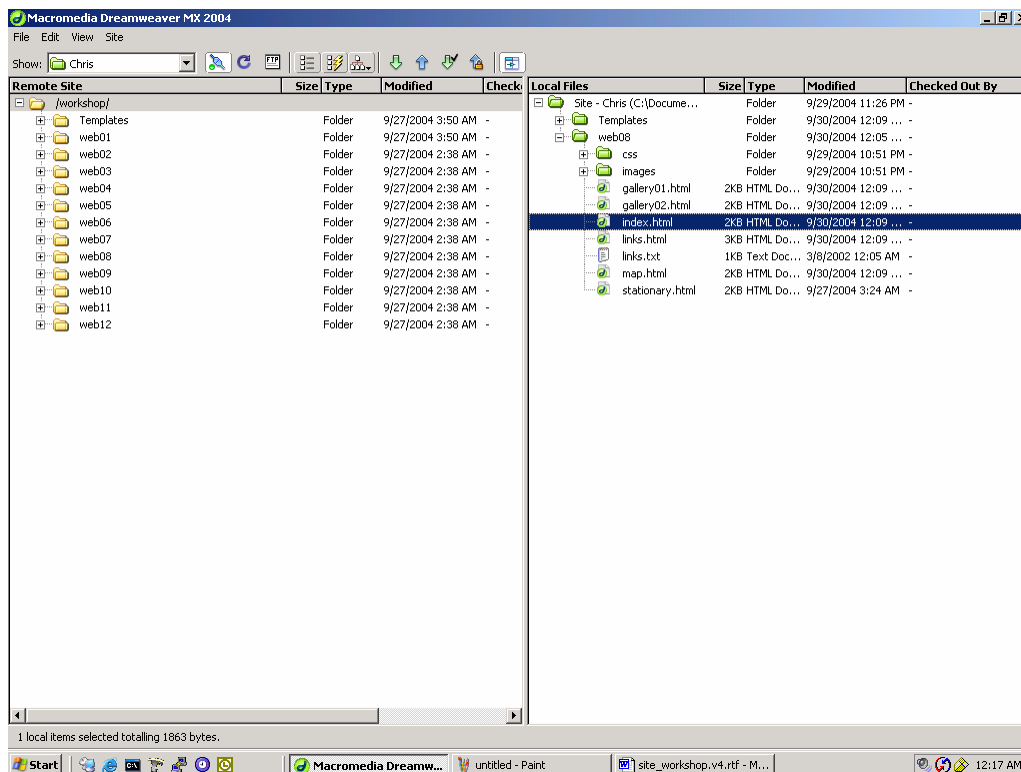
- VIII. Test the local site documents by previewing them and verifying their links.
 - a. Choose **File>Preview in Browser>ie explore** (Internet Explorer).
 - b. Test the navigational links in the header and footer of each document. Note any problems with the links.
- IX. Correct problems with the navigational links in the template document.
 - a. Open the template document, "web08.dwt", in the Templates folder of the Files window. If it is not visible, click the plus sign by the Templates icon to expand it.
 - b. Click on the "links" hotspot in the navigation image at the top of the page.

- c. Use the Point to File tool in the Property window to correct the Link line.
 - i. Drag the tool's arrow to the 'links.html' file in the Site page.
 - ii. This file name will appear in the Link line. (*See figure.*)
- d. Choose **File>Save** to preserve the correction.
 - i. When prompted by the "Update Template Files" dialog, click Update.
 - ii. A dialog will show 5 files examined and updated. Close the dialog.
- e. Close the template document window.

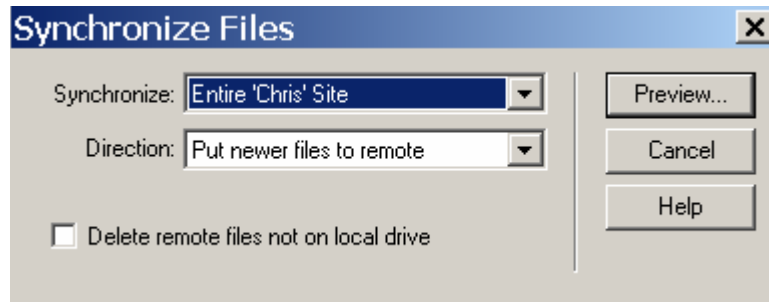


- X. Verify the correction.
 - a. Open the "index.html" document in the Files window.
 - b. Choose **File>Preview in Browser>iexplore** (Internet Explorer).
 - c. Click on the "links" hotspot to jump to the Museum Links page.
 - d. Close the browser window and the document window in Dreamweaver.

- XI. Upload documents to the remote site, that is, publish them to the web server.
 - a. Click on the Expand icon at the far right of the Files window toolbar.
 - b. Click on the Connection icon in the same toolbar; it looks like two plugs.
 - c. When prompted for a password, type **weekend** and click OK.



- d. Choose **Site>Synchronize** from the menu of the Files window.
 - i. Pick 'Entire site' from the "Synchronize" drop-down list.
 - ii. Pick 'Put newer files to remote' from the "Direction" drop-down list.
 - iii. Click the Preview button to check the result. There should be approximately 16 files to upload.
 - iv. If the preview looks correct, click the OK button to upload files.



- e. Review the results log and close it when finished.
- f. Expand the remote site folder labeled "web08" by clicking on the plus sign. All files and folders from your local site will be on the remote site.
- g. Click the "Expand/Collapse" icon to collapse the site page.
- h. View the pages at the server. Start Internet Explorer and type the address . . . **http://labweb.education.wisc.edu/workshop/web08/**
- i. Close Internet Explorer.

- XII. Next, make a larger change by removing the 'map' links from all pages in the site.
 - a. Open the template document, "web08.dwt", in the Templates folder.
 - b. Double-click on the navigation image anywhere except on a hotspot.
 - c. When prompted to choose an image source, pick "navbar2.gif".
 - d. Remove the 'map' hotspot from the far right end of the navigation bar.
 - i. Select the Pointer tool from the Map portion of the Property window.
 - ii. Highlight the 'map' hotspot and press Backspace to delete it.
 - e. Move to the template footer, highlight the last asterisk and "Map" link in the text menu, and press Backspace.
 - f. Change the 'Contact Us' link in the footer. Click on 'Contact Us' and substitute your email address for the one in the Link field of the Property window.
 - g. Choose **File>Save** to preserve the correction.
 - i. When prompted to update template files, choose Update.
 - ii. A dialog will show 5 files examined and updated. Close the dialog.
 - h. Close the template window.

- XIII. Synchronize with the remote site by repeating the steps outlined in XI above.