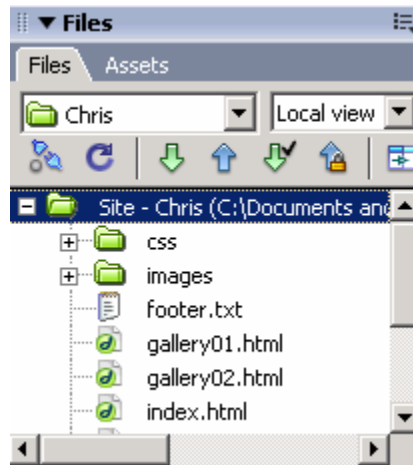


Dreamweaver and Cascading Style Sheets Workshop

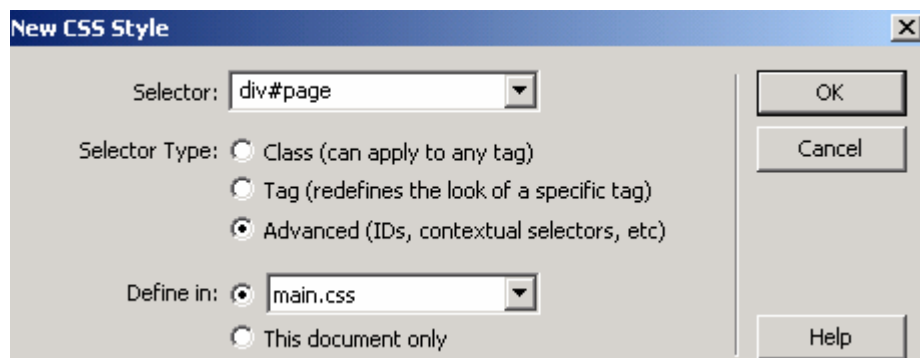
- I. Define the site by choosing **Site->Manage Sites** from the menu, click [New], and choose Site from the list.
 - a. Answer “What would you like to name your site?” with your first name.
 - b. Answer “No, I do not want to use a server technology.”
 - c. Answer “Edit local copies on my machine, then upload to server when ready”.
 - i. Click the Browse for File icon (folder), select the “workshop” folder on the desktop, and click [Open]. Click [Select] to make it the site folder.
 - ii. Verify that the last word in the text field is “workshop”.
 - d. Answer “None” to “How do you connect to your remote server?”
 - e. Review the summary then click [Done]. (*See figure*).



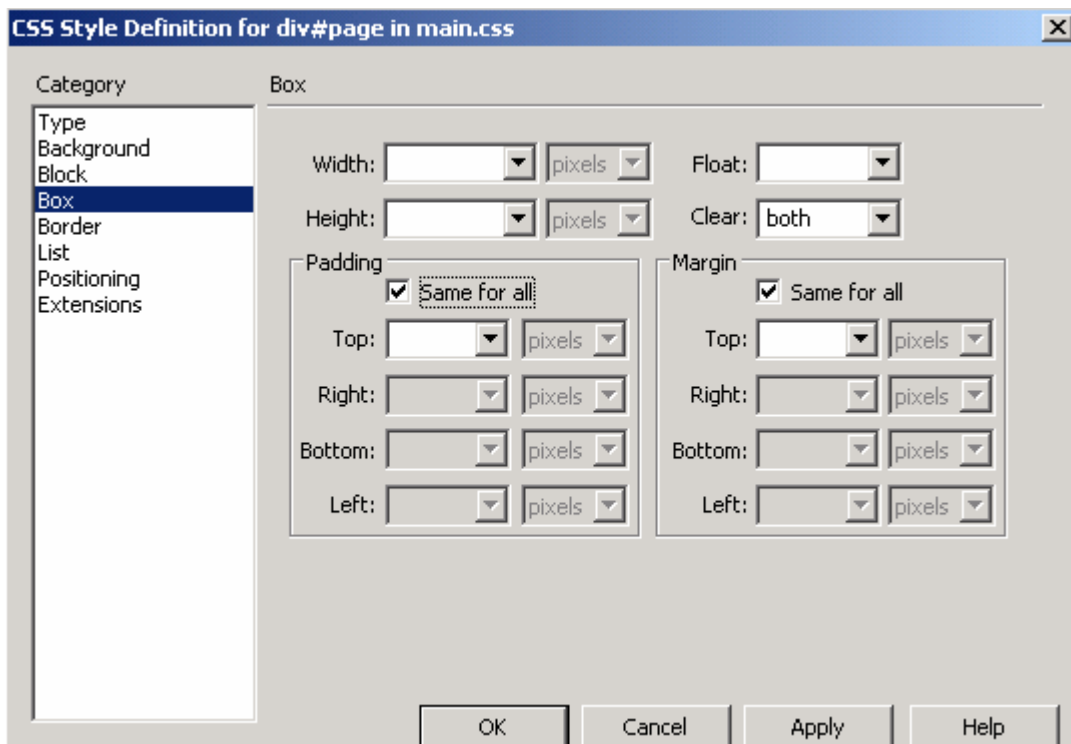
- II. Setup Accessibility preferences to help with ADA compliance.
 - a. Choose **Edit->Preferences**.
 - b. Select the Accessibility category.
 - c. Fill the Images checkbox.
 - d. Click [OK] to save the setting.
- III. Make a CSS-based template.
 - a. Close the Untitled document window if it is open.
 - b. Choose **File->New->Template page->HTML Template**, and click [Create].
 - c. Choose **File->Save**, type "styled" in the Save as field, and click [Save].
- IV. Make a style sheet.
 - a. Choose **File->New->CSS Style Sheets->Basic: Arial**, and click [Create].
 - b. Choose **File->Save**, type "main.css" in the File name field, navigate to the "css" folder, and click [Save]. Close its document window.

- V. Link the new style sheet to the template.
 - a. Right-Click on the Design window and choose Attach Style Sheet from the menu.
 - b. When prompted, click the Browse button, navigate to the “css” folder in the “workshop” folder, and select the “main.css” file.
 - c. Click [OK] to select the file and again to attach the file. *The style sheet file will hold style rules for page layout and text appearance.*

- VI. Make new style rules in the style sheet.
 - a. Right-Click on the Design window and choose New from the menu.
 - b. Type "div#page" (without quotes) into the Selector field, pick Advanced from the Selector Type radio buttons group, and click [OK]. (*See figure.*)



- c. Pick the Block Category and pick "center" from the Text align list. Pick the Box Category and pick "both" from the Clear list. Click [OK]. (*See figure.*)

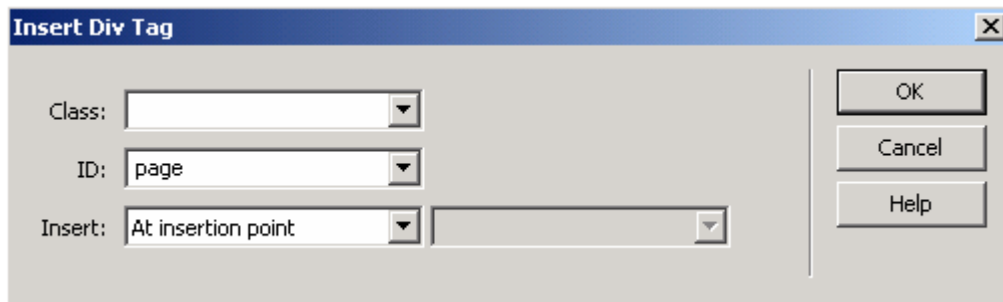


d. Repeat the previous three steps to make the following style rules:

Selector	Definition (Declaration)
div#header	Box: width=530 pixels; height=46 pixels; clear= both
div#body	Box: width=530 pixels; clear= both
div#footer	Type: size=70% Box: width=530 pixels; clear= both

VII. Apply styles to the template.

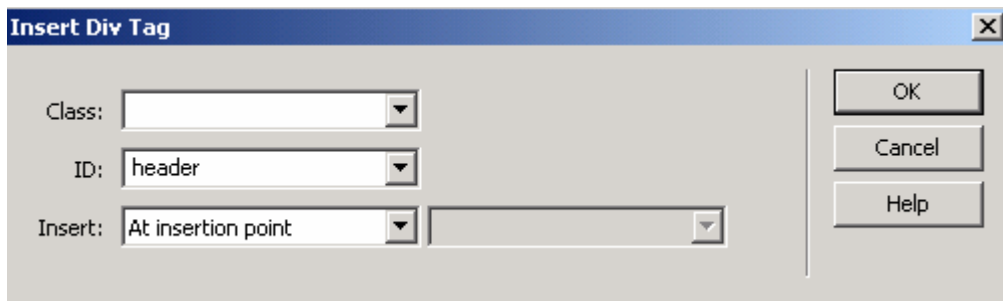
- Choose **Insert->Layout Objects->Div Tag**.
- When prompted, choose or type “page” in the ID field. (*See figure.*)
- Click the OK button to finish.



d. Press the Backspace key to delete the ‘Content for id "page" Goes Here’ line.

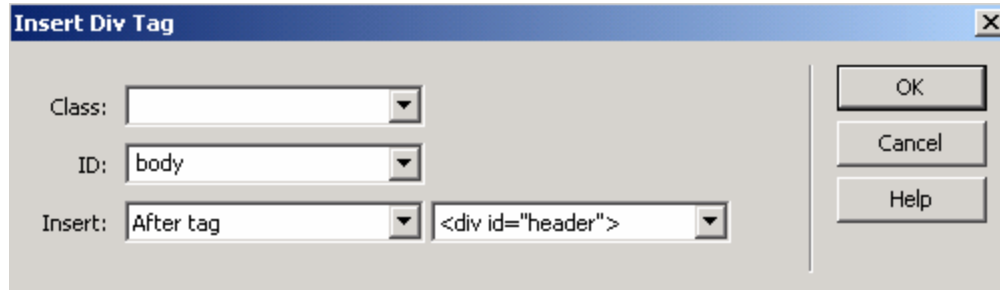
VIII. Make the page header.

- Choose **Insert->Layout Objects->Div Tag**.
- When prompted, choose or type “header” in the ID field. (*See figure.*)
- Click the OK button to finish.



- Choose **Insert->Image**.
- When prompted, navigate to the “images” folder of the “workshop” folder and open the “navbar.gif” file.
- When prompted by the Image Tag Accessibility Attributes dialog, type “navigation imagemap” in the Alternative Text field.

- g. Click the OK button to finish inserting the image.
 - h. Delete the 'Content for id "#header" Goes Here' line.
- IX. Make the page body.
- a. Choose **Insert->Layout Objects->Div Tag**.
 - b. When prompted, choose or type "body" in the ID field, choose After tag from the Insert list, and choose the tag '<div id="#header">'. (See figure.)
 - c. Click the OK button to finish.



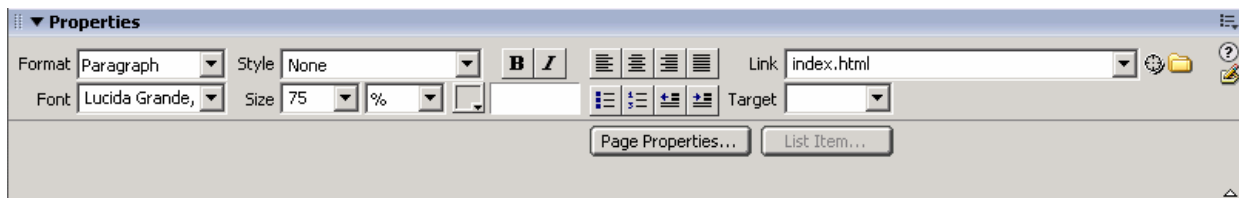
- d. Type "Insert Title Here" and press the Enter key to drop down a line.
 - e. Choose **Insert->Image**.
 - f. When the Open dialog appears, find and open the "picture.gif" file.
 - g. When prompted for Alternative Text, type "placeholder".
- X. Make the page footer.
- a. Choose **Insert->Layout Objects->Div Tag**.
 - b. When prompted, choose or type "footer" in the ID field, choose After tag from the Insert list, and choose the tag '<div id="#body">', Click the OK button to finish.
 - c. Press the Backspace key to delete the 'Content for id "#footer" Goes Here' line.
 - d. Choose **Insert->HTML->Horizontal Rule**.
 - e. Press the right arrow key [->] to shift the focus off of the horizontal rule and press the Enter key to move down a line.
 - f. Find and open the "footer.txt" file in the Site window.
 - g. Choose **Edit->Select All** to highlight all the text in the file.
 - h. Choose **Edit->Copy** to copy the selected text into the clipboard.
 - i. Close the document window.
 - j. Choose **Edit->Paste** to paste the text into the footer.
 - k. Place the cursor at the end of the first line (after the word Map). Choose **Insert->HTML->Horizontal Rule** to place a line under the menu text.
 - l. Choose **File->Save** to save your work.
- XI. Make a single editable region in the middle of the document.
- a. Highlight the 'Insert Title Here' line and the Mona Lisa icon.
 - b. Choose **Insert->Template Objects->Editable Region** from the menu.
 - c. When prompted to name the region, type **CONTENT**. (See figure.)



This is a page footer. It doesn't need to be here but it is a common area on web pages to include: contact, copyright, disclaimer, and other types of information that are not the main content of your page.

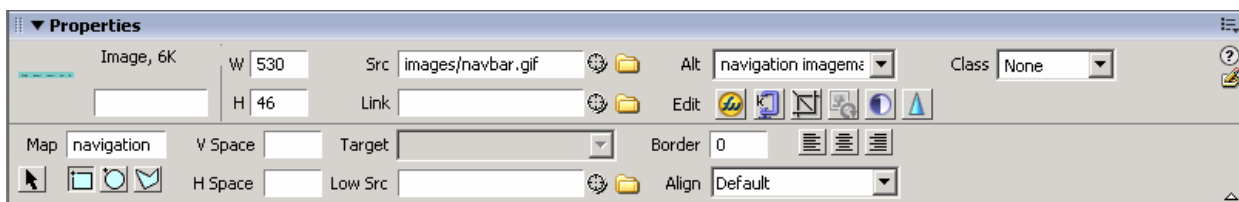
Copyright 2003, 2004.

- XII. Make links in the page footer.
- Highlight the word “Home” in the footer text.
 - Locate the “Point to File” tool on the Link line of the Properties window.
 - Click and drag the pointer to the File window to select the “index.html” file.
 - Release the mouse button, and the file name appears in the Link line. (*See image.*)

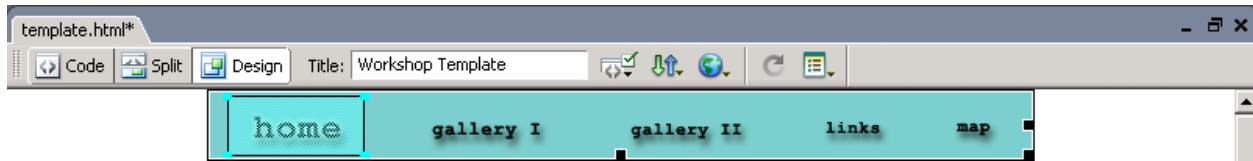


- Repeat steps a-d with the remaining words on this line of text. Take care to highlight “Gallery I” and “Gallery II” when making their links.

- XIII. Make the imagemap in the page header.
- Click on the image in the header.
 - Click the rectangle tool in the **Map** area of the Properties window. (*See figure.*)



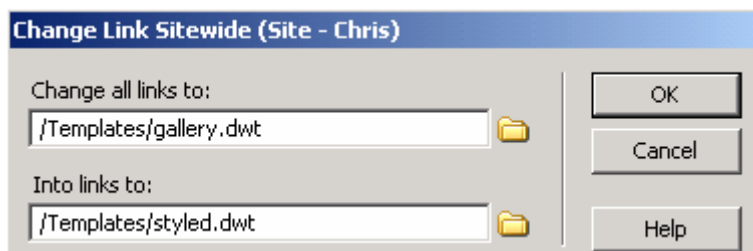
- Draw a rectangle around the word **home** in the image. (*See figure.*)



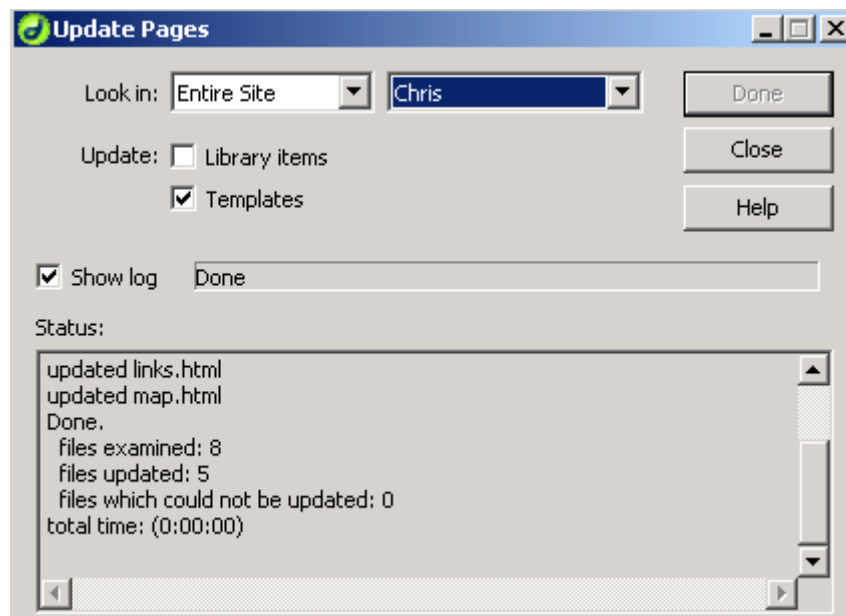
- d. Click on the Point-to-File tool and drag the pointer to the File window to select the "index.html" file.
- e. Release the mouse button, and the file name appears in the Link line.
- f. Repeat steps c-e with the remaining words on the image.
- g. Choose **File->Save** to save your work.

XIV. Switch templates used by the site.

- a. Expand the "Templates" folder in the File window and select "gallery.dwt".
- b. Pick **Site->Change Link Sitewide...**, click on the second folder icon, pick All Files from the Files of type list, open the Templates folder, pick "styled.dwt", and click [OK]. (See figure.) Click [Update] when prompted to update files.



- c. Pick **Modify->Templates->Update Pages...**
- d. Click [Start] to update the files and click [Close] to finish. (See figure.)



- XV. Preview the page in a browser.
- Open the "index.html" file from the File window.
 - Choose **File->Preview in Browser->iexplore** (Internet Explorer).
 - Choose **File->Close** to exit the browser (Internet Explorer).
- XVI. Append new styles to the end of the main.css document.
- Expand the "css" folder in the File window and open "main.css" and "lists.css".
 - Click the lists.css tab to view its contents, and copy all its contents by pressing [Ctrl-A] then pressing [Ctrl-C]. Press [Ctrl-W] to close.
 - Move to the bottom of the main.css window to append the new text. To paste text into the document press [Ctrl-V]. Press [Ctrl-S] to save and [Ctrl-W] to close.
- XVII. Convert footer menu into a horizontal list.
- Expand the "Templates" folder in the File window and open "styled.dwt".
 - Select each asterisk between menu words and press [Enter] to insert doublespace.
 - Select the menu words, then pick **Text->List->Unordered List**.



- XVIII. Convert header imagemap into a horizontal list.
- Click on the header image and press [Delete] to remove it. At the same spot, type "home" [Enter], "gallery I" [Enter], "gallery II" [Enter], "links" [Enter], and "map" to make a double-spaced column of text. *Use the letter l (el) instead of the number 1 (one) to keep the appearance of the original site.*
 - Start making links by highlighting the word "home".
 - Locate the "Point to File" tool on the Link line of the Properties window.
 - Click and drag the pointer to the Site window to select the "index.html" file.
 - Release the mouse button, and the file name appears in the Link line.
 - Repeat steps b-e with the remaining words in the header. Take care to highlight "gallery I" and "gallery II" when making their links.
 - Select all the header words, and pick **Text->List->Unordered List**.
 - Right-click on the "div#header" style in the Design window and pick Edit from the pop-up menu.
 - Pick the Background category and type "#7acc8" (without quotes) in the Color field. *This gives the whole header the color of the recently deleted image.*
 - Save and update files by pressing [Ctrl-S] and clicking [Update].



References

Meyer, Eric. (2003). *CSS: Mastering the Language of Web Design*. Indianapolis, Indiana: New Riders Publishing.

Meyer, Eric. (2001). *CSS: Pocket Reference*. Sebastopol, CA: O'Reilly & Associates, Inc.

Newhouse, Mark. (27 September 2002). CSS Design: Taming Lists. *A List Apart: Issue 151*. <http://www.alistapart.com/articles/taminglists/>.

Zeldman, Jeffrey. (2003). *Designing with Web Standards*. Indianapolis, IN: New Riders Publishing.